

Consultant:



ME
ENGINEERING
Mechanical/Electrical Engineering Consultants
ME Project # 180329
Rochester • Buffalo • Syracuse • Capital District
130 N. CHESTER ST. ROCHESTER, NY 14604 919.286.9300
www.meeengineering.com

Revision:

1 7/26/19 CONFORMANCE SET

Architect of Record:

Drawn: JRM

Checked: GDD

Scale: AS NOTED

Key Plan:

Project Name:

**SENCIT
APARTMENTS**

ARCTIC AVENUE
ATLANTIC CITY, NJ

Sheet Name:

**SCHOOL HOUSE APTS.
BUILDING A & B:**

**FIRST AND SECOND
FLOOR PLANS - HVAC**

Project Number:

18116

Issue Date:

JUNE 26, 2019

Sheet Number:

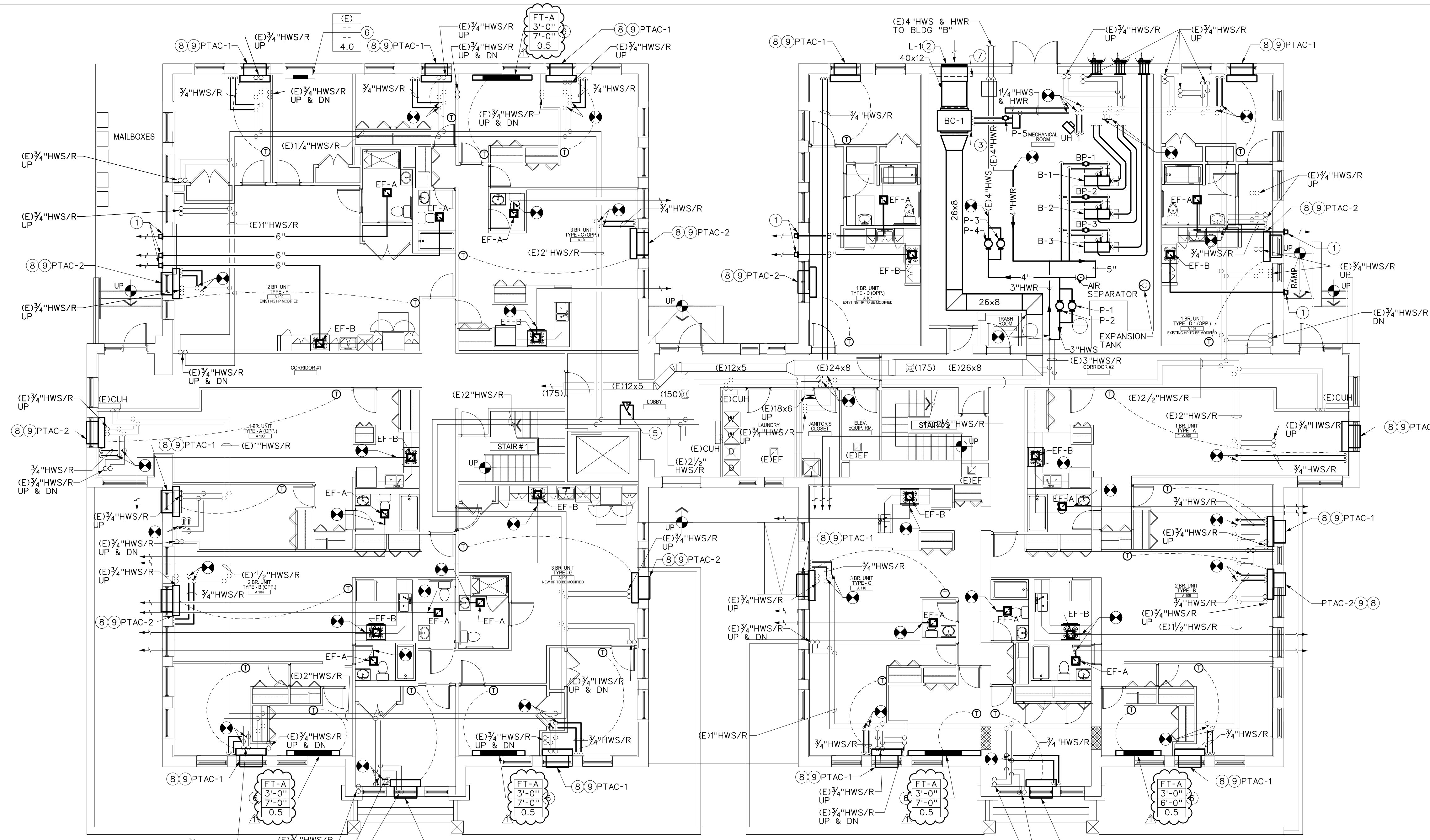
H2.SA.00

DRAWING NOTES:

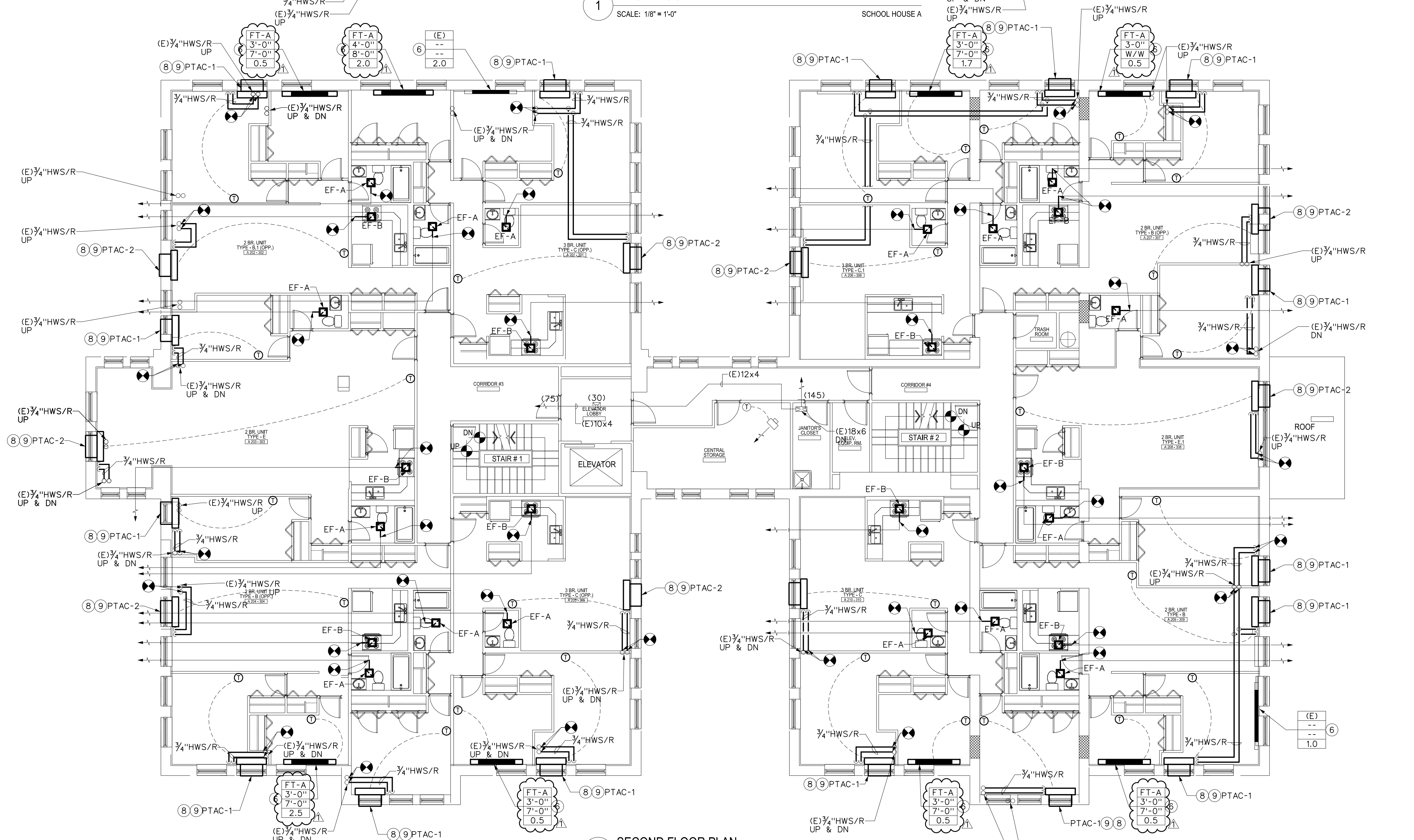
- 1 COORDINATE THE EXACT LOCATION OF WALL CAP WITH ARCHITECTURAL ELEVATIONS. THE EXHAUST WALL CAPS MUST HAVE A MINIMUM 3'-0" SEPARATION FROM ANY INTAKE OR OPERABLE WINDOW. COLOR SHALL BE SELECTED BY ARCHITECT.
- 2 PROVIDE SHEETMETAL PLENUM OFF BACK OF LOUVER. REFER TO DETAILS FOR FURTHER REQUIREMENTS.
- 3 PUMP P-3 SHALL BE ENABLED WHENEVER THE OUTSIDE AIR TEMPERATURE FALLS BELOW 60 DEG. F. REFER TO DETAIL *9 ON DRAWING H4.SA.00 FOR PIPING DETAILS.
- 4 PROVIDE R/VS PIPING TO OUTDOOR ACCU. PIPING SHALL BE SIZED AND ROUTED PER MANUFACTURER'S RECOMMENDATIONS.
- 5 PROVIDE DIFFERENTIAL PRESSURE TRANSDUCER AT LOCATION SHOWN TO CONTROL THE OPERATION OF PUMPS P-1 & P-2.
- 6 FLOW RATE SPECIFIED WITHIN FIN RADIATION TAG IS THE TOTAL GPM FOR ALL FIN RADIATION WITHIN THE ZONE.
- 7 AUTOMATIC AIR DAMPER SHALL BE WIRED TO AHU FOR SIMULTANEOUS OPERATION. WHEN THE AHU IS ON, THE DAMPER SHALL BE OPEN.
- 8 PROVIDE NEW PACKAGED TERMINAL AIR CONDITIONER (PTAC) AND ASSOCIATED SLEEVE AT EXISTING LOCATION. FIELD MEASURE EXACT SLEEVE DEPTH PRIOR TO ORDERING. REFER TO SCHEDULES AND SPECIFICATIONS FOR FURTHER REQUIREMENTS.
- 9 PROVIDE 3/4" HWS & HWR PIPING TO HYDRONIC COIL WITHIN PTAC.

GENERAL NOTES:

- A. REPLACE ALL EXISTING ISOLATION VALVES, BALANCE VALVES, AND CONTROL VALVES ASSOCIATED WITH NEW FIN TUBE RADIATION.
- B. ALL MECHANICAL EQUIPMENT (PUMPS, BOILERS, EXPANSION TANK, ETC.) SHALL BE INSTALLED AT A MINIMUM OF 1'-0" A.F.F.
- C. ALL NEW AND EXISTING EXHAUST DUCTWORK SHALL BE CLEANED AFTER ALL SYSTEMS HAVE BEEN INSTALLED. REFER TO SPECIFICATIONS FOR FURTHER REQUIREMENTS.



1 FIRST FLOOR PLAN
SCALE: 1/8" = 1'-0"



2 SECOND FLOOR PLAN
SCALE: 1/8" = 1'-0"