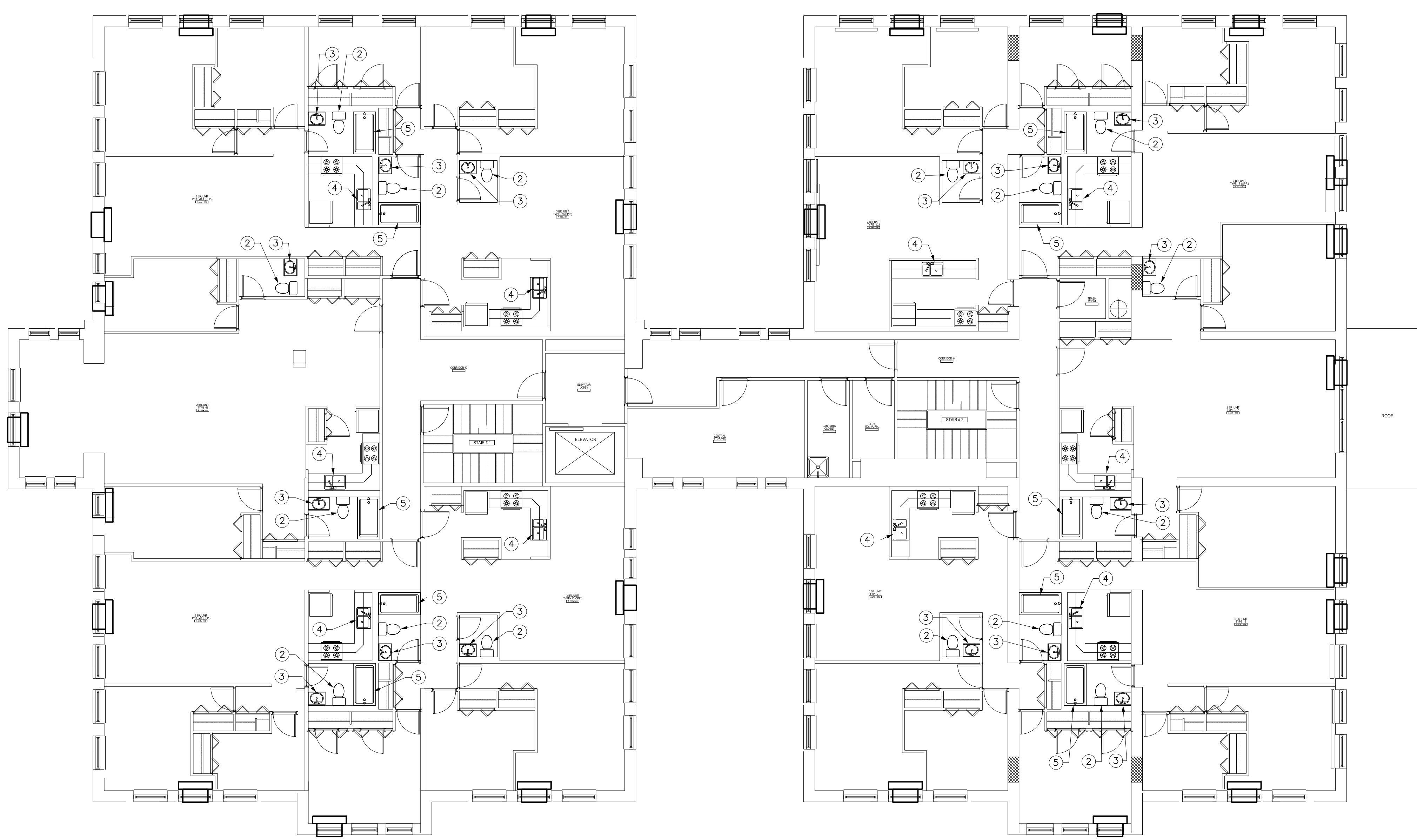


DRAWING NOTES:

- ① SAWCUT AND PATCH FLOOR, REFER TO DETAIL 5/P-501.
- ② REMOVE WATER CLOSET AND REPLACE WITH WC-A.
- ③ REMOVE LAVATORY AND REPLACE WITH LAV-A.
- ④ REMOVE SINK AND REPLACE WITH SK-A.
- ⑤ REMOVE TUB TRIM AND REPLACE WITH TUB-A FOR TUB AND ON SHOWER STALL REPLACEMENT. REFER TO MATRIX FOR EXACT COUNT.
- ⑥ CONNECT IW TO CONDENSATE CONNECTION ON HVAC UNIT. REFER TO 'H' DRAWING. SAWCUT AND PATCH WALL AS REQUIRED.

1 FIRST FLOOR PLAN
SCALE: 1/8" = 1'-0"

SCHOOL HOUSE A



2 SECOND FLOOR PLAN
SCALE: 1/8" = 1'-0"

SCHOOL HOUSE A

Consultant:



Mechanical/Electrical Engineering Consultants
ME Project # 180329
Rochester | Buffalo | Syracuse | Capital District
133 N. CHESTER ST. ROCHESTER, NY 14604 935.285.5500
www.meengineering.com

Revision:

1 7/26/19 CONFORMANCE SET

Architect of Record:

Drawn: ZPS

Checked: THK

Scale: AS NOTED

Key Plan:

Project Name:

**SENCIT
APARTMENTS**

ARCTIC AVENUE
ATLANTIC CITY, NJ

Sheet Name:

**SCHOOL HOUSE APTS.
BUILDING A & B:
FIRST AND SECOND
FLOOR PLANS -
PLUMBING**

Project Number:

18116

Issue Date:

JUNE 26, 2019

Sheet Number:

P2.SA.00